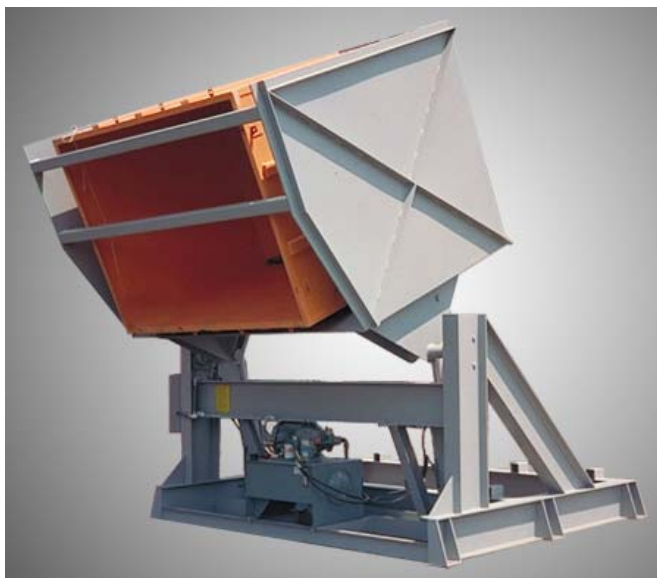


# **SKIP HOIST HYDRAULIC DUMPERS**

**FOR DISCHARGING THE CONTENTS OF ANY CONTAINER**



**16,000# CAPACITY FOR RADIOACTIVE WASTE**



**4000# CAPACITY  
FOR SMALL BRASS PARTS**

## ***Features:***

- Easy To Install
- Completely Free-Standing
- Fully Assembled And Wired
- Unlimited Capacity, Dump Heights And Skip Sizes
- Discharge Angles Up To 180°
- Heavy Duty Industrial Construction
- Can Be Automated



**100# CAPACITY, LIFT & SEAL  
FOR A HYDROSCOPIC POWDER**

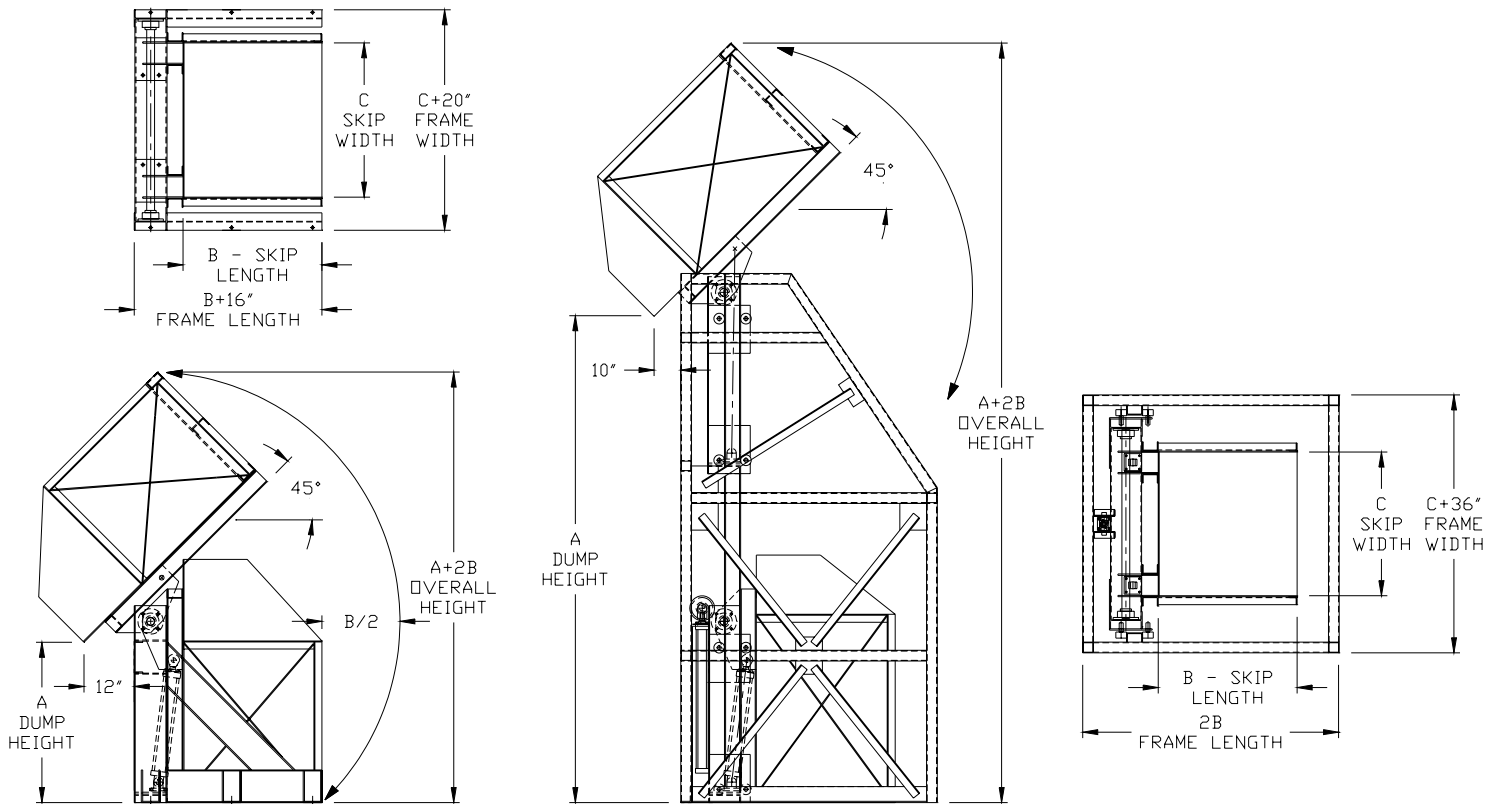


**ESSEX - RISE CORPORATION**

4 FAIRFIELD CRESCENT - WEST CALDWELL, NJ 07006

(973) 575-7483PH - (973) 575-0576FX

[WWW.ESSEXRISE.COM](http://WWW.ESSEXRISE.COM)



All Dimensions Are Approximate And May Vary By Application

## LOW LEVEL DUMPER

## HIGH LEVEL DUMPER

### Standard Features

- The Dumper is powered up/down via momentary contact pushbutton with E-stop and equipped with upper and lower limit switches. NEMA 4/12 watertite/dustite control package rating with 230/460/3/60 primary and 115 volt control circuit.
- Skip pivot rotates in relubricatable, heavy duty four bolt mounted ball or roller bearings.
- Hydraulic system includes but is not limited to; Two 2500PSI minimum rated heavy duty cylinders with flow control valves, integral motor/pump power unit with welded steel reservoir, breather/filler cap, inlet strainer, pressure relief and directional valve. All hoses easily replacable using female swivel, flared end fittings and o-ring adapters wherever possible to insure leak free operation.
- Operating time of low level dumpers is 80 seconds maximum depending on capacity and skip size, high level dumper times are higher depending on the dumping height.
- Frame and skip is of welded construction using carbon steel structural shapes, tubing and plate. Skip to have a hold down designed specifically for each container handled. Equipment power tool and solvent cleaned to SSPC-PC3 and then finished with a high gloss, DTM Machinery Gray Enamel.
- An electrically interlocked safety gate and enclosure is quoted as standard equipment in most applications.
- Available options include; Lift & Seal operation for dust free discharge, Automatic Loading, Higher Operating Speeds, Stainless Steel Construction, Corrosion Resistant or Food Grade Finishes, Explosion Proof Controls, and many other frequently requested features.



**ESSEX - RISE CORPORATION**

4 FAIRFIELD CRESCENT, WEST CALDWELL, NJ 07006

(973) 575-7483PH - (973) 575-0576FX