

VERTICAL RECIPROCATING CONVEYORS

HYDRO **L**IFT



Features:

- Economical
- Space Saving
- Easy To Install
- Safe And Reliable
- Hydraulically Operated
- Meets All National Codes

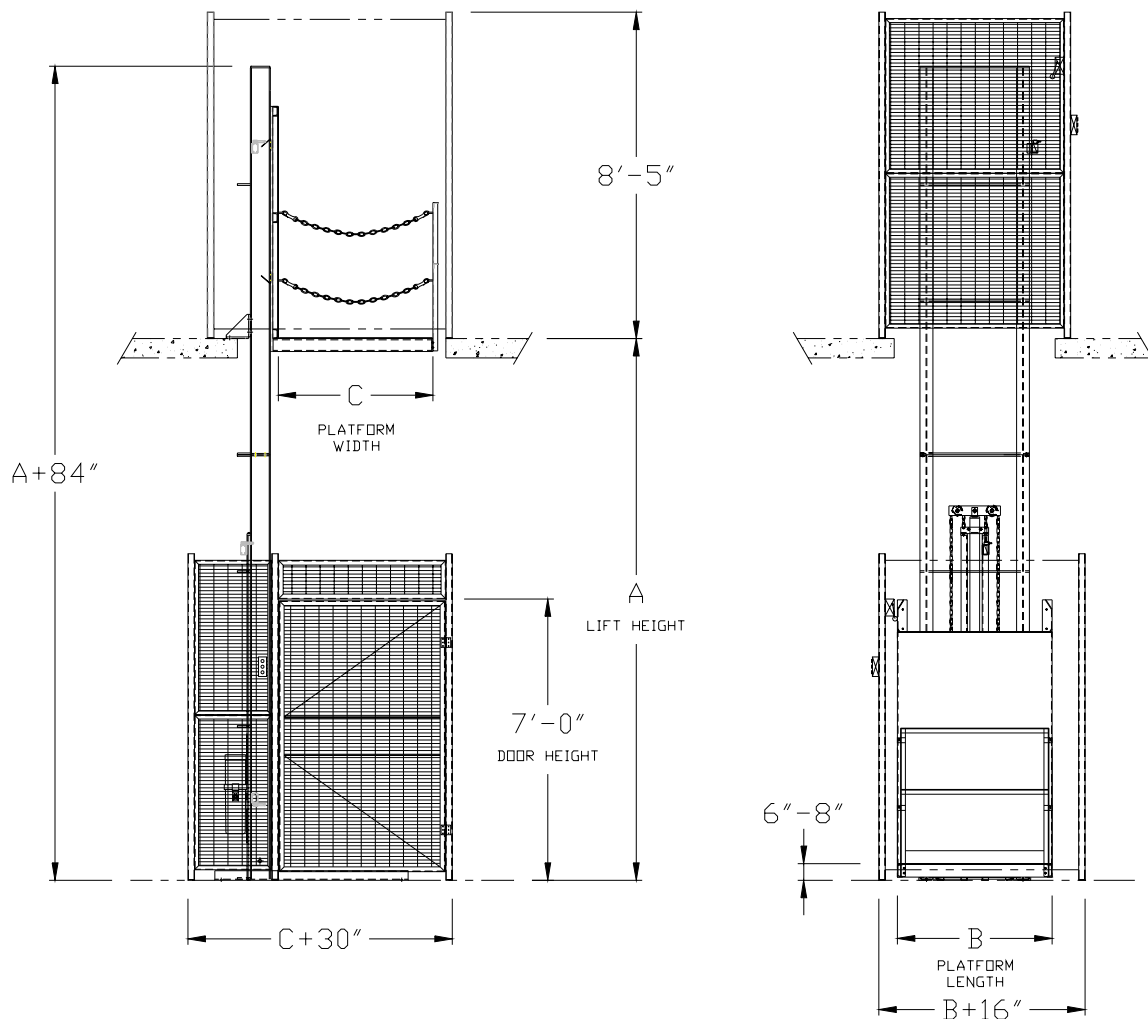


ESSEX - RISE CORPORATION

4 FAIRFIELD CRESCENT - WEST CALDWELL, NJ 07006

(973) 575-7483PH - (973) 575-0576FX

WWW.ESSEXRISE.COM



Standard Features

- The Lift is powered Up/Down via momentary contact pushbutton with E-stop at each level and is equipped with upper/lower travel and slack chain limit switches. Motor starting is via a full voltage magnetic contactor with solid-state overload and phase loss protection. NEMA I General Purpose indoor control package rating with 230/460/3/60 primary and 115 volt control circuit.
- Platform guides and chain wheels are machined steel with sintered bronze bushings or sealed ball bearings. Lifting chains have a 5:1 safety factor minimum and include a free-fall safety to prevent the platform from an uncontrolled decent should the chains break.
- Hydraulic system includes but not limited to; one or more welded body, single acting cylinders with chrome plated rods and flow control valves, integral motor/pump power unit with (3) gallon minimum reservoir, breather/filler cap, inlet strainer, pressure relief and directional valve. All hoses are easily replaced using female swivel, flared end fittings. The power unit is typically mounted within the frame envelope.
- Standard operating speed of the Lift is 20 feet per minute with other speeds available.
- Frame and Platform is of welded construction using carbon steel structural shapes, angles and plate. The platform will have hand-rails with toe plates on the unused sides and dual snap chains on access ends. All fabricated components are power tool and solvent cleaned then finished with high gloss, Machinery Grey enamel.
- A safety gate and enclosure is quoted as standard equipment and includes elevator style interlocks to prevent the door from being opened if the car is not present and the car from moving if the door is open.
- Available options include; Multiple Levels, Car Gates, Full Height Enclosures, Watertight/Dusttight/Explosion Proof Controls, and many other frequently requested features.



ESSEX - RISE CORPORATION

4 FAIRFIELD CRESCENT, WEST CALDWELL, NJ 07006

(973) 575-7483PH - (973) 575-0576FX